



# Successful Installation

of

**PHOTOLUMINESCENT  
EXIT PATH  
MARKING SYSTEMS**

This presentation is protected by US and International copyright laws. Reproduction, distribution, display or use of the presentation in any form without written permission of the speaker and Balco Inc. is prohibited.

**Balco, Inc. © 2010**

2009 IBC Sec. 1024  
2009 IFC Sec. 4604.23  
Mandates

Photoluminescent Markings in all enclosed stairwells used for emergency evacuation in all **New & Existing** buildings exceeding 75ft

- Handrails
- Stair Treads & Landings
- Demarcation Lines
- Exit Door Markings & Signage
- Obstruction Markings







# Successful PL Installations

Requires Knowledge of:

- Enclosure Environment
- Surface Inspection & Prep
- Enclosure Traffic & Maintenance

# Successful PL Installations

Verify Enclosure Lighting Meets Code:

- 1 Ft-Candle Minimum
- Continuously Illuminated
- **NO** Motion Sensors Allowed

# Know Your Materials

## Types of PL Products

- ▶ Flexible – Tapes and Thin Films
- ▶ Semi-Rigid - PVC Based
- ▶ Rigid - PVC Laminated to an Aluminum Substrate
- ▶ Rigid – Powder Coated
- ▶ Coatings – Two Part Paint Systems



# Enclosure Environment

Difficult At Best

- Non-Conditioned Air
- Replicates Exterior Environment for Humidity & Temperature

Effects the Material Selection

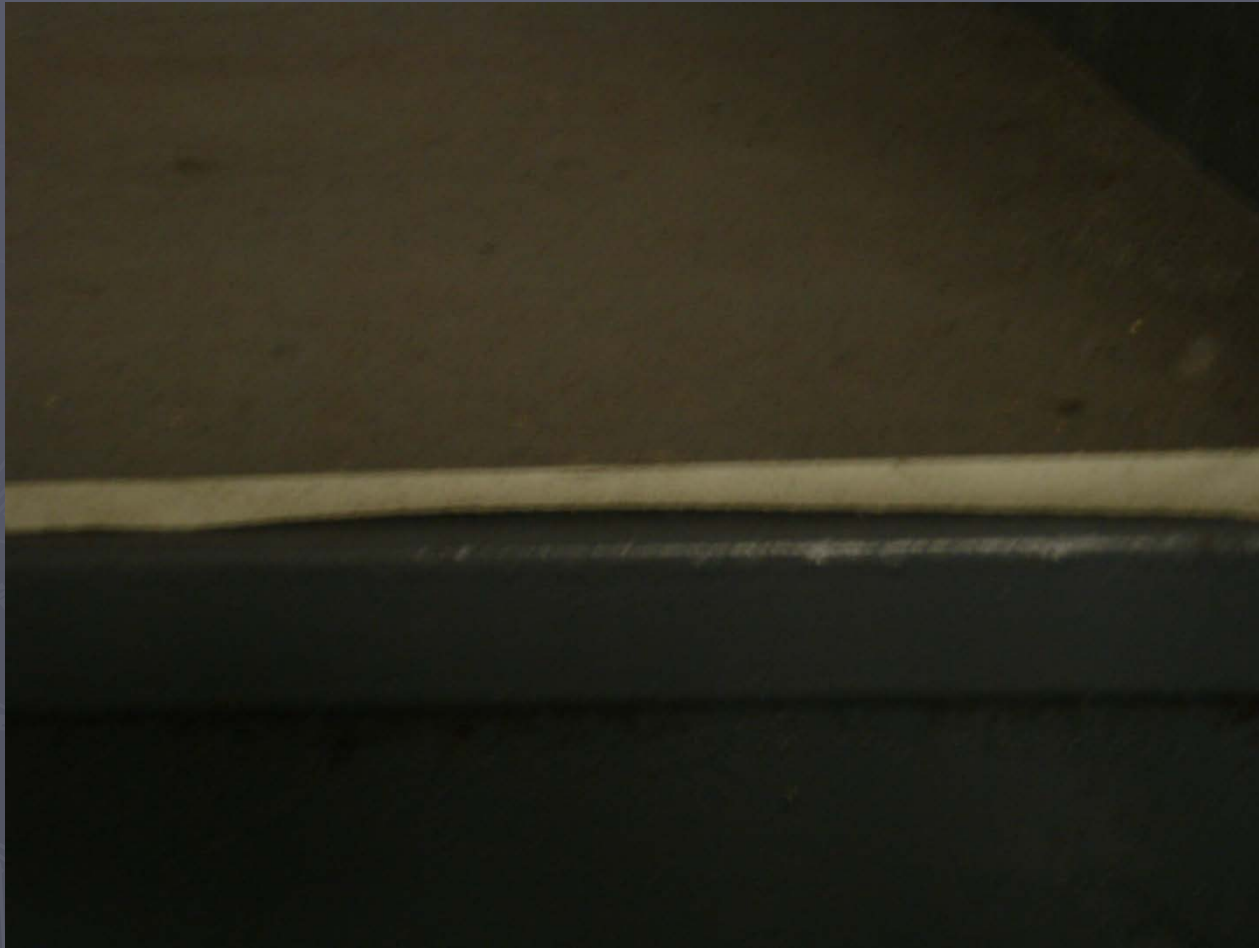
# Poor Material Selection



# Poor Material Selection



# Poor Material Selection



# Enclosure Environment

Know Your Environmental Conditions

Select Materials Accordingly



# Successful PL Installations

Requires Inspection & Surface Prep

Concrete

- Spalling, Loose Paint
- Surface Sounding
- Dished & Worn Treads
- Clean Surface 50% Alcohol

# Successful PL Installations

Requires Inspection & Surface Prep

Metal Stairs

- Wire Brush Loose Paint
- Clean Surface 50% Alcohol

# Successful PL Installations

Requires Inspection & Surface Prep

Rubber, VCT, Carpet Stairs

- Good Bonding to Subsurface
- Mechanical Attachment

# Enclosure Traffic & Maintenance

Knowledge of:

- Stairs Used Every Day
- Level of Maintenance  
Power Washing
- Effects Material Selection

# NFPA 101 and 5000

## Means of Egress

### Section 7.2.2.5.5 Exit Stair Path Markings

#### Differences from IBC

- No minimum building height specified
- PL strip integral with the nosing of each step
- Adhesive backed tapes shall not be used

**Effective January 1, 2009 Nationwide**



# GSA

## 2005 Facilities Standard - P100

### Section 7.8 Means of Egress

- Requires PL Exit Path Markings
- UL 924 PL Exit Signs
- Up-date to 2009 NFPA May of 2010

# Poor Material Selection



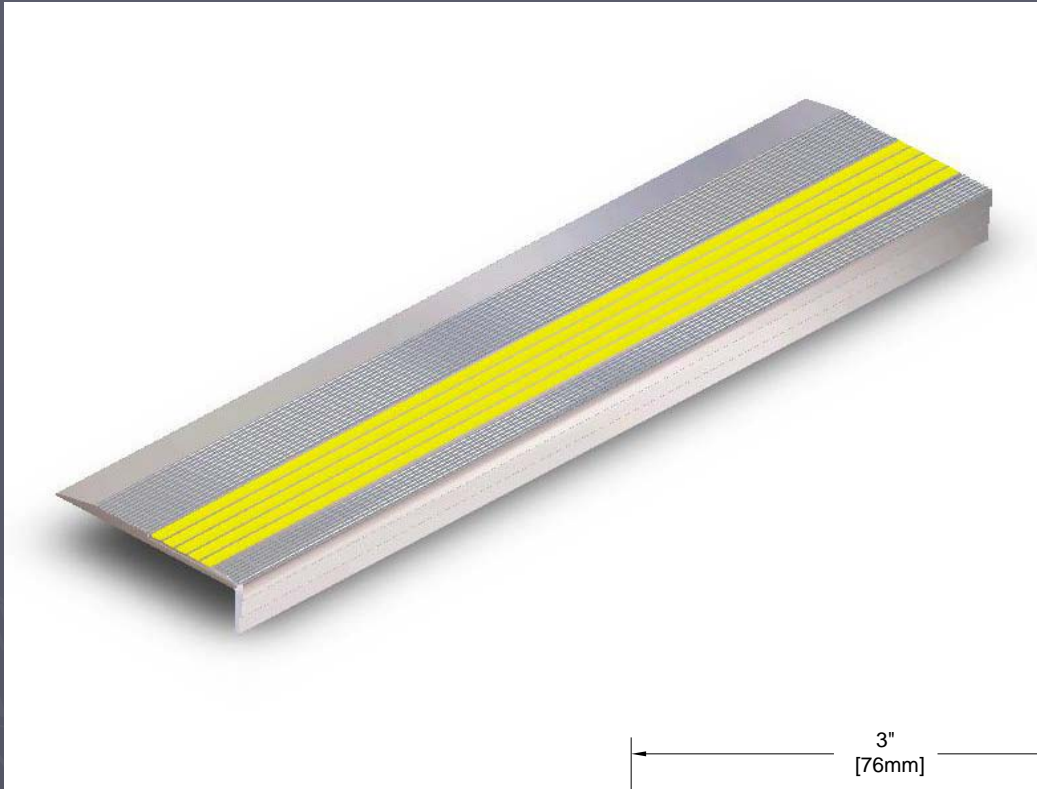
# Not Successful PL Installations



# Not Successful PL Installations





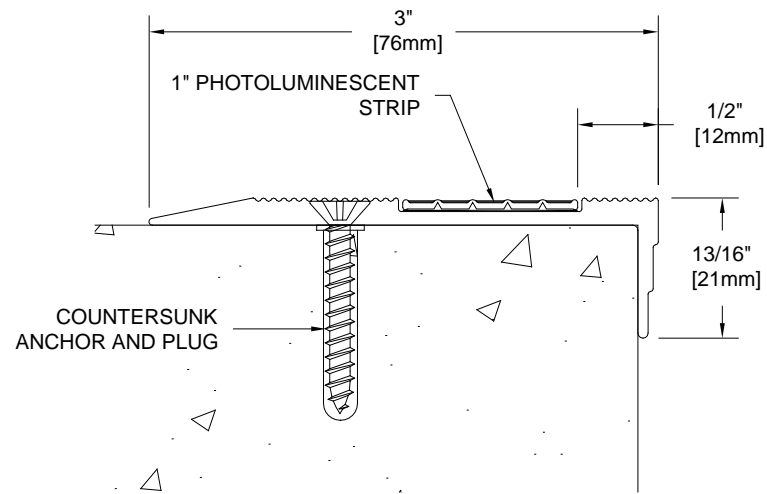


Economical

Exceeds PL Codes

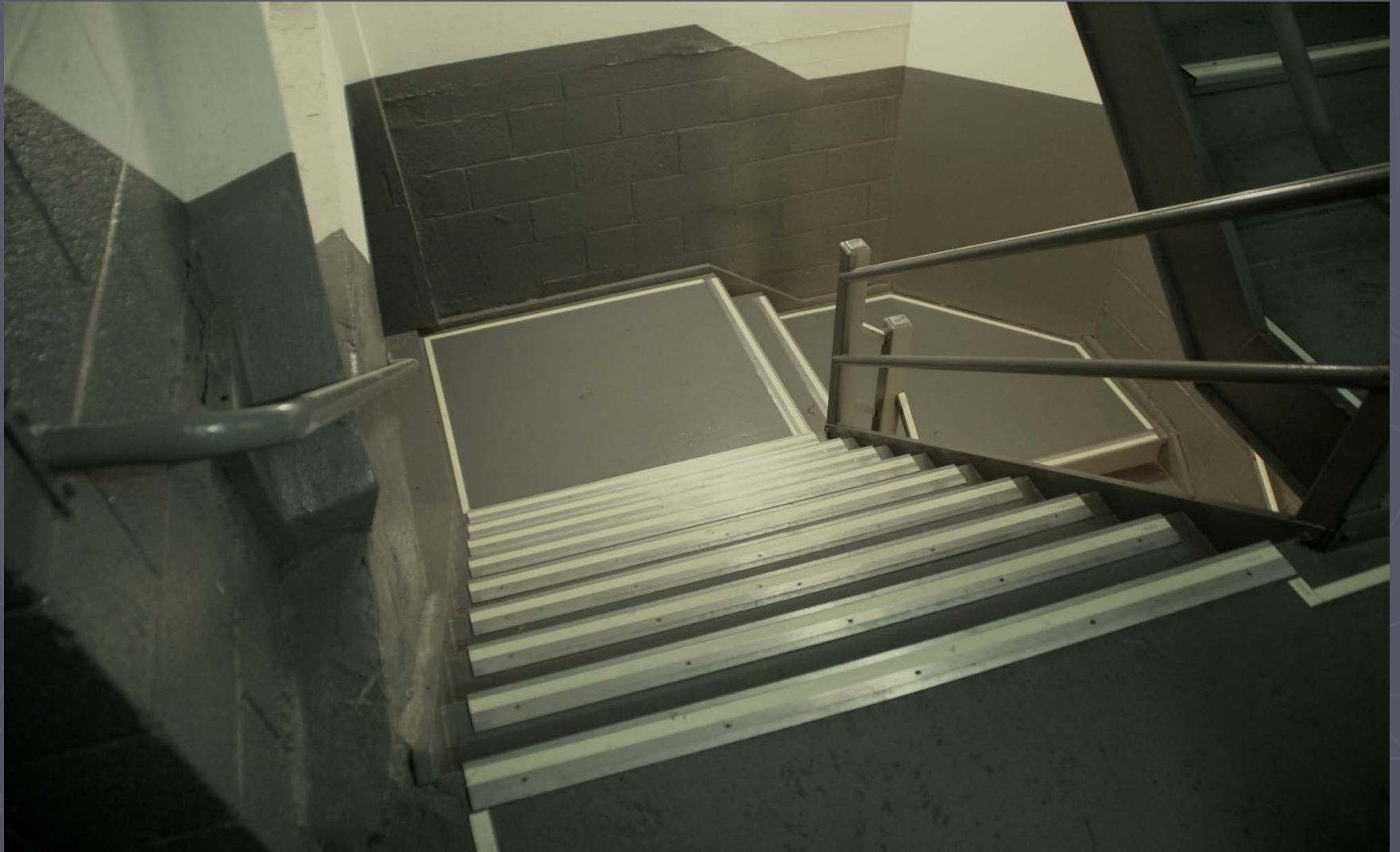
Slip Resistant

Durable



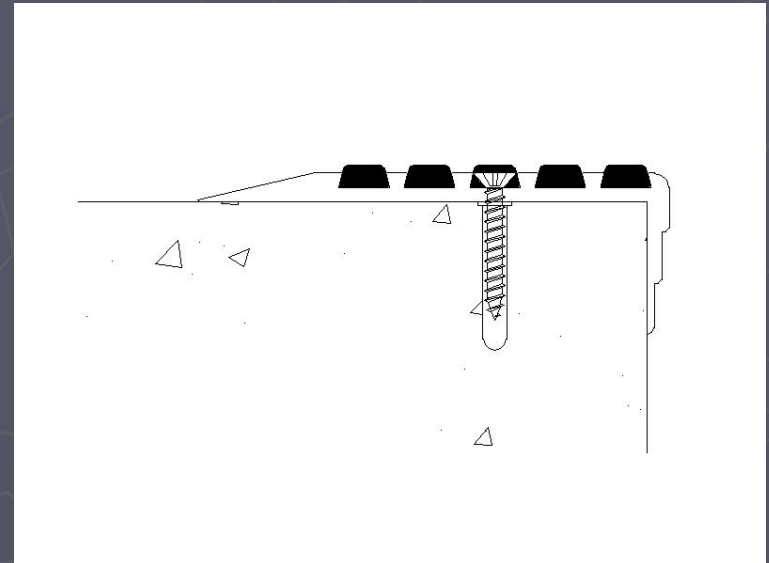
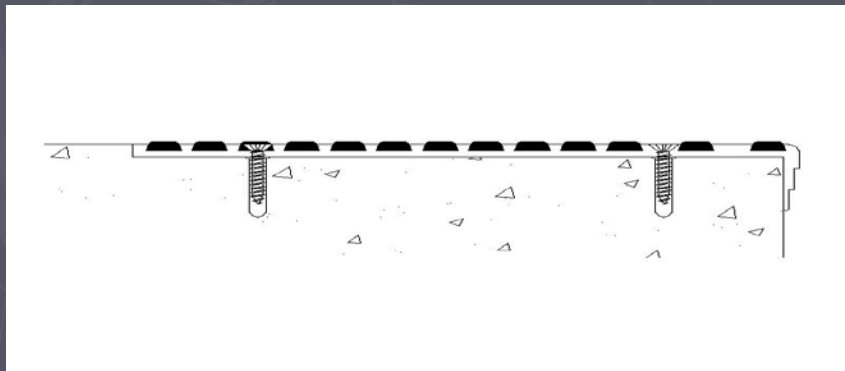
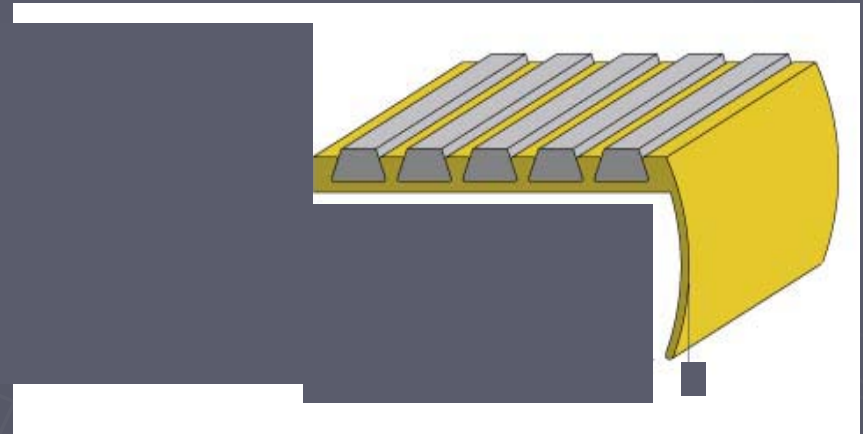


# Successful PL Installations



# Retrofit Stair Nosing

- Used on stairs that have been formed already
- Can install on stairs that have been chipped on the edges
- Higher Traffic Volume
- Solid or ribbed abrasive
- Swept back or 90 degree



# Successful PL Installations





# Successful PL Installations



# Successful PL Installations

## Enclosure Traffic & Maintenance

- PL Strip Integral with Stair Nosing
- Glue It & Screw It
- If You Walk On It  
No Tape or Paint

# Successful PL Installations

Requires Knowledge of:

- Enclosure Environment
- Surface Inspection & Prep
- Enclosure Traffic & Maintenance



# How Do You Know It Works

Recommend PL Products

Be Tested and Listed by an  
Accredited Independent Laboratory

**DIIM**

# Photoluminescent Exit Sign



- IBC/IFC Section 1011.4
- Listed For UL 924
- LEED Points Qualified
- Zero Energy Use
- Zero Maintenance
- Use in Low and High Level Applications
- Meets All Current Building Codes-NFPA 101, GSA P100
- No Battery Backup
- 25+ Year Life Expectancy

# Photoluminescent Exit Signs

Verify Enclosure Lighting Meets Code:

- 5 Ft-Candle Ambient Light Min
- 60 Minutes Prior to Occupancy
- Continuously Illuminated



# Successful Installation

of

**PHOTOLUMINESCENT  
EXIT PATH  
MARKING SYSTEMS**

*Thank you for your  
time and attention!*



Balco, Inc.

2626 S Sheridan

Wichita, KS 67217

316 945-9328 – phone

316 945-0789 – fax

[info@balcousa.com](mailto:info@balcousa.com) – e-mail

[www.balcousa.com](http://www.balcousa.com)