



A personal membership group of the
American Hospital Association

Region 6
Barrier Management Symposium
14 April 2015



A personal membership group of the
American Hospital Association

Largest association dedicated to
health care physical environment

Over 11,000 Members

Trusted Industry Resource

© 2015 American Society for Healthcare Engineering,
a personal membership group of the American Hospital Association
155 N. Wacker Drive, Suite 400 | Chicago, IL 60606
ashe.org | ashe@aha.org | 312-422-3800

Mission, vision, and goals

- Mission: Dedicated to optimizing the health care physical environment
- Vision: To engage stakeholders in the creation of the optimum healing health care environment.
- Strategic goals
 - Regulation
 - Reputation
 - Capacity



Strategic Imperatives

While strategic goals are long-term targets, strategic imperatives are short-term (1–2 year) initiatives that support ASHE's strategic goals.

Member value

Succession planning

Sustainability and commissioning



A personal membership group of the
American Hospital Association

Recent Advocacy Issues

History of Building Codes

“If a builder build of a house for someone, and does not construct it properly, and the house which he built fall in and kill its owner, then that builder shall be put to death.”

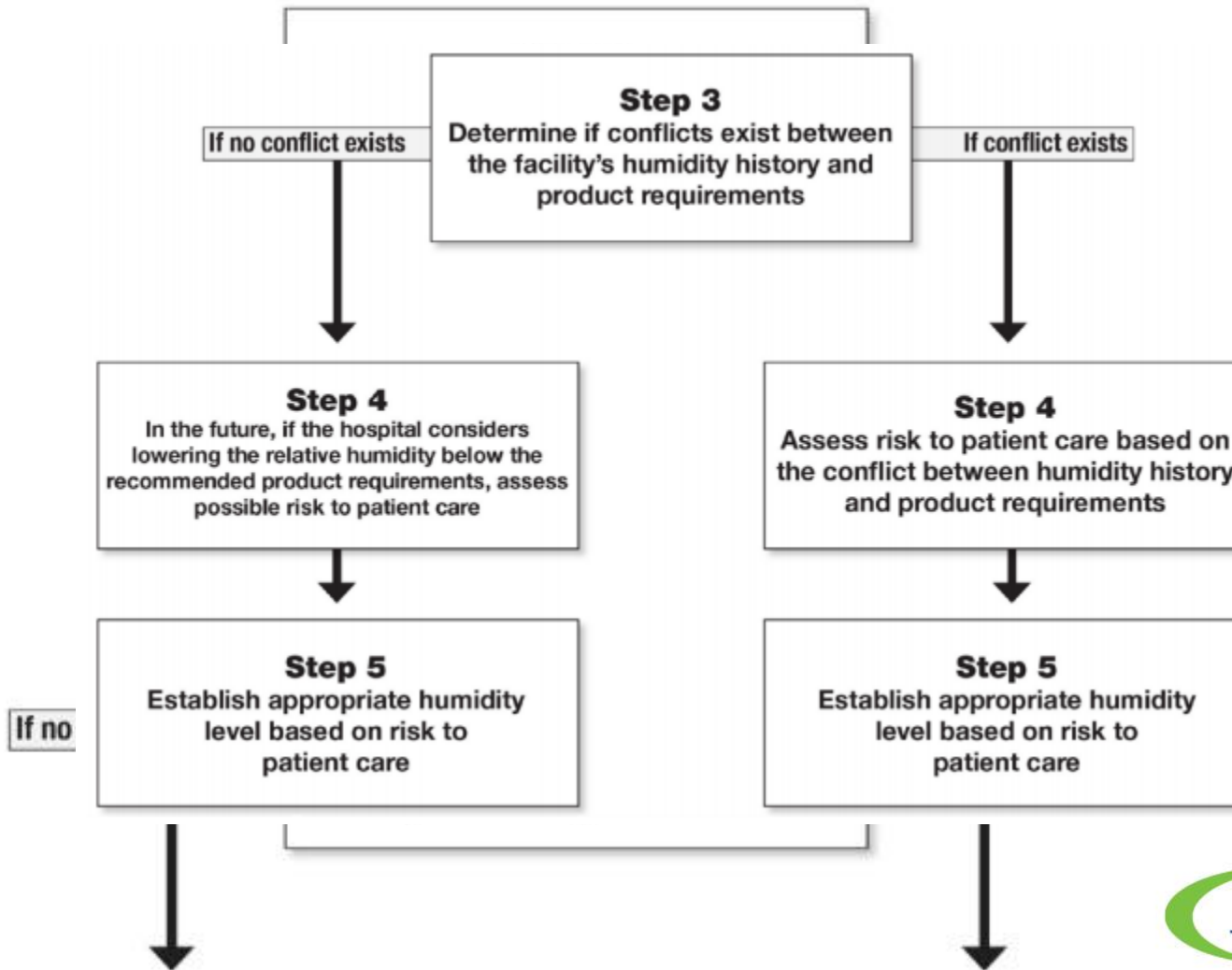
Babylonian Emperor Hammurabi circa 1800 BCE

Flammable Gases

- Conduct a self-assessment of potential dangers, and mitigate appropriately
- NFPA 50: *Standard for Bulk Oxygen Systems at Consumer Sites*
- NFPA 54: *National Fuel Gas Code*
- NFPA 58: *Liquefied Petroleum Gas Code*
- NFPA 99: *Health Care Facilities Code, including Chapter 5: Gas and Vacuum Systems*
- Portions of NFPA 101: *Life Safety Code®*



OR Humidity



Utility Inventory & AEM's

- New Standards Effective **July 2014**
- **Standard EC.02.05.01**

The hospital manages risks associated with its utility systems.
- **EC.02.05.01 EP 1**

The hospital designs and installs utility systems that meet patient care and operational needs. (See also EC.02.06.05, EP 1)

RPT's & Categorical Waivers



- ASHE Issue Brief
- CMS Categorical Waiver
- RPT-SPRPT Comparison
- RPT Guidance Comparison
- Sample P&P
- Sample Waiver Election

Categorical waivers offered by CMS



Current S&C	Prior S&C (if applicable)	Provision	Description	Code Requirement	Code Origin (if prior to 2012 edition)	Conditions	ASHE Issue Brief
April 19, 2013 (S&C 13-25-1SC & ASC)		Relative humidity in the OR	Lowest the relative humidity (RH) requirement for operating rooms and other anesthetizing locations from at least 35 percent to at least 20 percent.	NFPA 99-2012, 5-4.1.1 and Addendum D of the ASHRAE 170-2008		To use this waiver, a facility must demonstrate that it meets the minimum RH standard of ≥20 percent. The waiver does not apply when more stringent RH control levels are required by state or local laws and regulations; or where reduction in RH would negatively affect ventilation system performance.	April 22 Issue brief
August 30 (S&C 13-58-1SC)		Medical gas master alarms	Allows substitution of a centralized computer system for one Category 1 medical gas master alarm.	NFPA 99-2012, 5.1.9.4 and compliance with all other applicable NFPA 99-1999 medical gas master alarm provisions	NFPA 99-2005	The organization must demonstrate that it complies with all other applicable NFPA 99-1999 medical gas master alarm provisions, as well as with section 5.1.9.4 of NFPA 99-2012.	September 5 Issue brief
August 30 (S&C 13-58-1SC)		Openings in exit enclosures	Permits existing openings in exit enclosures to mechanical equipment spaces if they are protected by fire-rated door assemblies.	NFPA 101-2012, 7.1.3.2.1(9)(c) and all other applicable NFPA 101-2000 exit provisions	NFPA 101-2003	The mechanical equipment space must be in a building protected with an approved supervised automatic sprinkler systems, must be used only for non-fuel-fired mechanical equipment, must contain NO storage of combustible materials, and must be protected by a fire rated door assembly.	September 5 Issue brief
August 30 (S&C 13-58-1SC)		Emergency generators and standby power systems	Reduces the annual diesel-powered generator exercising requirement from two (2) continuous hours to one hour and 30 minutes.	NFPA 110-2010, 8.4.2.3 and all other applicable NFPA 110-1999 operational inspection and testing provisions		The annual load test is only required when the monthly diesel generator test does not comply with minimum loading requirements to avoid wet stacking.	September 5 Issue brief
August 30 (S&C 13-58-1SC)		Door locking arrangements	Allows door locking arrangements in areas where there are clinical needs, security risks or specialized protective measures required for safety.	NFPA 101-2012, 18/19.2.2.2.2.6 as well as all other applicable NFPA 101-2000 door provisions	NFPA 101-2009		September 5 Issue brief



Current S&C	Prior S&C (if applicable)	Provision	Description	Code Requirement	Code Origin (if prior to 2012 edition)	Conditions	ASHE Issue Brief
August 30 (S&C 13-58-1SC)		Multiple delayed egress locks	Allows more than one delayed-egress lock in the egress path where the clinical needs require specialized security measures or when a patient requires specialized protective measures for safety.	NFPA 101-2012, 18/19.2.2.2.4 and compliance with all other applicable NFPA 101-2000 door provisions	NFPA 101-2009	The facility must also use compensating safety measures specified in those sections that facilitate rapid removal of occupants.	September 5 Issue brief
August 30 (S&C 13-58-1SC)		Suites	Accommodates the use of suites by allowing: (1) one of the required means of egress from sleeping and non-sleeping suites to be through another suite, provided adequate separation exists between suites; (2) one of the two required exit access doors from sleeping and non-sleeping suites to be into an exit stair, exit passageway, or exit door to the exterior; and (3) an increase in sleeping room suite size up to 10,000 sq. ft.	NFPA 101-2012, 18/19.2.5.7 and compliance with all other applicable NFPA 101-2000 suite provisions	NFPA 101-2006, with subsequent changes in the 2009 and 2012 editions	Corridor wall and door requirements for the outer boundary of the suite must meet the requirements for the smoke zone. One or more egress routes may be required, depending on the size of the suite. *	September 5 Issue brief
August 30 (S&C 13-58-1SC)		Extinguishing requirements	Allows for the reduction in the testing frequencies for sprinkler system vanetype and pressure switch type waterflow alarm devices to semiannual, and electric motor-driven pump assemblies to monthly.	NFPA 25-2011, 5.3 and 8.3 and all other applicable NFPA 25-1998 (as referenced in section 9.7.5 of the NFPA 101-2000)	The semi-monthly water flow test first appeared in NFPA 25-2002.		September 5 Issue brief
August 30 (S&C 13-58-1SC)		Clean waste and patient record recycling containers	Allows the increase in size of containers used solely for recycling clean waste or for patient records awaiting destruction outside of a hazardous storage area to be a maximum of 96 gallons.	NFPA 101-2012, 18/19.7.5.7.2		The container must pass an FM fire test.	September 5 Issue brief

Codes & Standards

- **ASHRAE**

 - 189.3-IgCC-LEED/170/188P

- **FGI**

 - 2018 Cycle Starting

 - 2010 E-Learning

- **NFPA**

 - 2018 Code Cycle

 - Important Dates

 - 12/6/16 Membership

 - 6/4/17 Voting for 2018 101 & 99

- **ICC**

 - 2018 Code Cycle

 - Code Adoption Delays



A personal membership group of the
American Hospital Association

Questions?

Jonathan Flannery, CHFM, FASHE, MHSA
Senior Associate Director of Advocacy

**Resources Areas: Codes and standards, regulatory
issues, state agency relations**

Office: 312-422-3825 Cell: 501-813-2400

e-mail: jflannery@aha.org

© 2015 American Society for Healthcare Engineering,
a personal membership group of the American Hospital Association
155 N. Wacker Drive, Suite 400 | Chicago, IL 60606
ashe.org | ashe@aha.org | 312-422-3800



A personal membership group of the
American Hospital Association